



Animals

Do you know any endangered or vulnerable species?

Do you know what animals live in Tanzania?



The Animal Kingdom

If you could choose to be one animal what would it be and why?

Name some of your favourite animals.

Sadly human activity often threatens the survival of many animals. Can you match the animal to the threat(s) to its survival? Check answers on page 4.

polar bear

new roads and construction in its habitat

Asian and African elephants

clearing of its rainforest habitat to create cattle pastures

Bolivian chinchilla rat

climate change is causing the Arctic sea ice to melt

emperor penguin

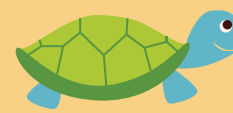
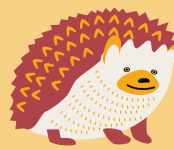
poaching for ivory and meat, loss of habitat due to human population expansion

hedgehog

overfishing, oil spills and changes to the sea ice due to climate change

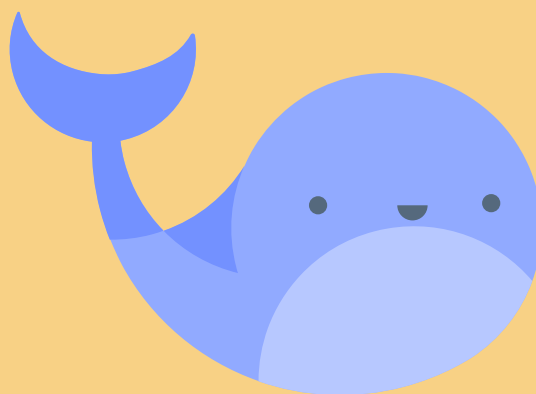
We can take action to prevent habitat destruction and take care of our planet! Check out five top tips from National Geographic Kids:

<https://www.natgeokids.com/uk/discover/science/nature/conservation-tips/>



Vulnerable and Endangered Species

Can you name any vulnerable or endangered species?
Write them in the pink box below.



Draw one of the animals in your list or on
the previous page in the box below.





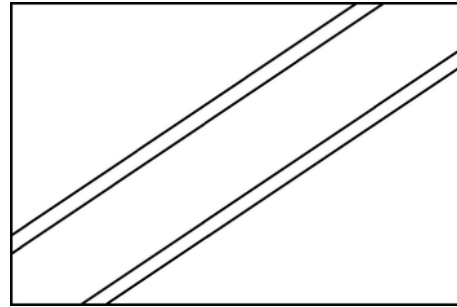
Tanzania: Animals

Find out the missing facts about Tanzania.

Hint: search for Tanzania at www.natgeokids.com

Tanzania

Colour in the flag of Tanzania -->



The painting *below* is in a Tanzanian style called *tingatinga*. Label the animals. Check the answers on page 4.

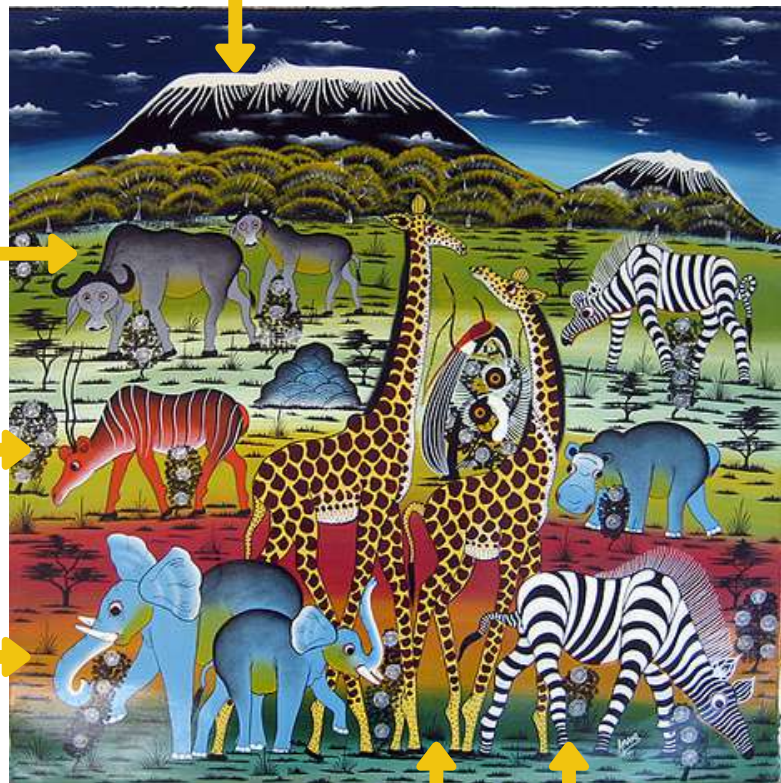
What is the name of this mountain? It is the tallest in Africa.

1. K _ _ _ _ _

2. w _ _ _ b _ _ _

3. gazelle
_ _ _ _ _

4. _ _ _ _ _



5. _ _ _ _ f _

6. _ _ _ _

What Tanzanian animals are missing?...

7. l _ _ _

8. c _ _ _ _ _ e

9. r _ _ n _

Answers

Animal Kingdom: Matching Activity

polar bear - climate change which causes the Arctic sea ice to melt

Asian and African elephants - poaching for ivory and meat, loss of habitat due to human population expansion

Bolivian chinchilla rat - clearing of its rainforest habitat to create cattle pastures

emperor penguin - overfishing, oilspills and changes to the sea ice due to climate change

hedgehog - new roads and construction in its habitat

Tanzania Animals:

1. Kilimanjaro

2. wildebeest

3. gazelle

4. elephant

5. giraffe

6. zebra

7. lion

8. crocodile

9. rhino